

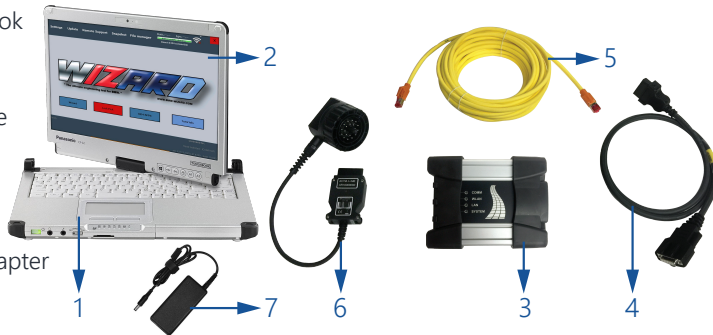
INTRODUCTION

The WIZARD is the premier aftermarket system for experienced BMW, Mini, and Rolls-Royce technicians. It offers advanced diagnostic and reprogramming capabilities that exceed the capabilities of dealer tools. The WIZARD features innovative and comprehensive functions which allows technicians to efficiently resolve even the most complicated issues. The WIZARD combines state-of-the-art hardware with custom developed software to provide coverage for all BMW, Mini, and Rolls-Royce vehicles to date.

The WIZARD software has many unique capabilities that surpass the functions of any other tools on the market. These include: individual module flashing; manual coding; changing the VIN and vehicle order; used components coding; reading and deleting of error codes with comprehensive explanations; actuations; and live data streams. For additional details, please visit our website or contact us.

KIT CONTENTS

- 1 Panasonic Toughbook
- 2 WIZARD Software
- 3 iCOM Next Interface
- 4 OBD II Cable
- 5 LAN Cable
- 6 Optional 20-Pin Adapter
- 7 Laptop Charger



LAPTOP FEATURES

The WIZARD uses the renowned Panasonic Toughbook CF-C2. Highlights include:

- Most durable and flexible business convertible PCs in the market
- Combines desktop performance, world-class connectivity and advanced mobility
- Intel Core i5 Processor for high performance and durability
- HD multi-Touch display with daylight feasibility
- Semi-rugged, spill resistant, and lightweight

iCOM NEXT FEATURES

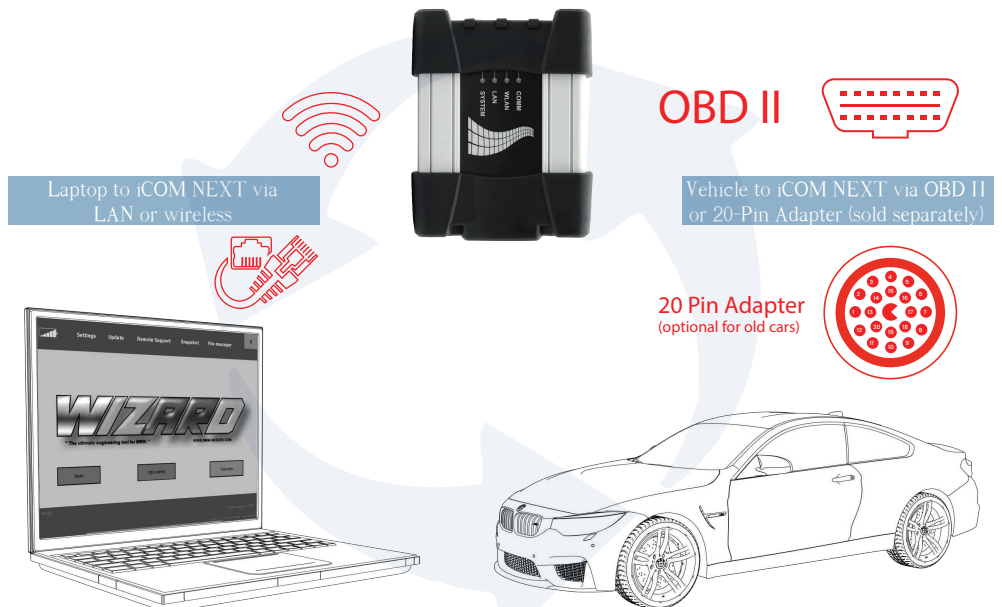
- BMW OEM interface for diagnostic and programming
- Communicates with all protocols found in old and new BMW, Mini and Rolls-Royce
- Rugged design with high communication speeds
- Wireless or LAN connectivity

WIZARD SOFTWARE FEATURES

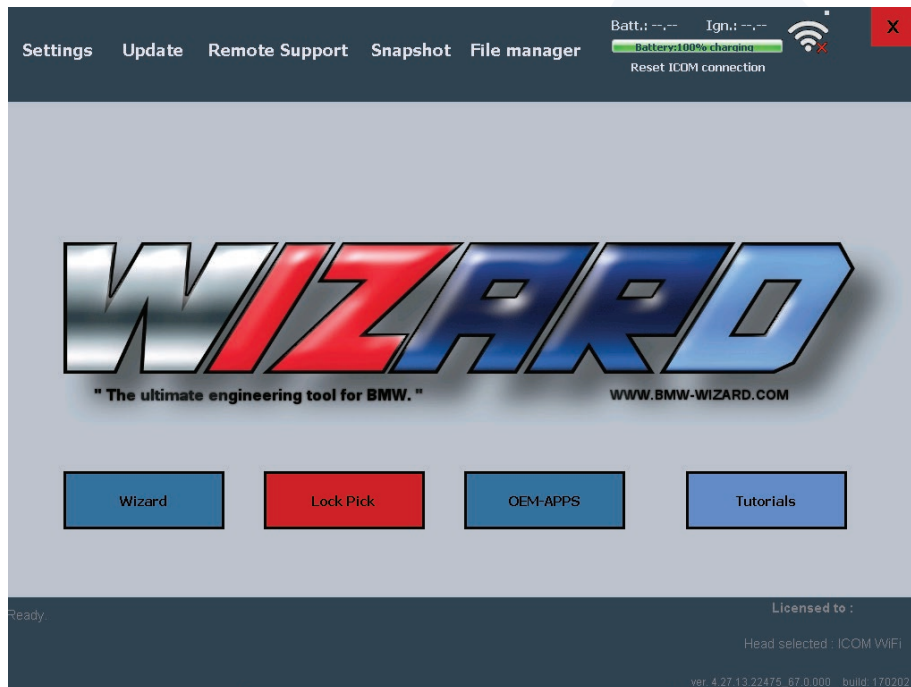
- Online updates, training & support
- Flashing, Coding, & Manual Coding for all supported control units
- Building Therapy Plans for BN2020 cars (F/G series)
- Fixing coding status for individual control units (BN2020 family)
- Preparing new FEM/BDC before coding (fixing Vehicle Order and I-levels).
- Complete Component Activation (triggering) with detailed descriptions
- Complete Live Data Acquisition with chart presentation
- Emergency Flashing
- Individual Module Coding/Flashing
- Generate & Modify Vehicle Order
- CIC FSC/NBT map code generator
- OEM Level technical information, maintenance, assembly, & service information
- OEM level procedural functions
- Diagnostic based recommendations
- Comprehensive Fault Code Descriptions & Explanations
- Complete Status Reports

HOW IT WORKS

The WIZARD comes as a complete package ready to go out of the box. All the hardware needed is combined with user-friendly software. **Software not sold separately.**



MAIN SCREEN



Wizard: Launches the WIZARD software

Lock Pick: Optional Lock Pick software

OEM-APPS: Launches BMW OEM software

Tutorials: Instructional videos

Settings: Allows for selecting the type of head, Adjust various settings

Update: Software update

Remote Support: Set up internet connectivity & allow access to your system

Snapshot: Screen, video, and webcam capture functions

File manager: Print or manage files

GETTING STARTED

- 1 Connect the laptop to the iCOM NEXT using the LAN cable
- 2 Connect the iCOM NEXT to the car using the OBD2 cable
- 3 Turn on the Wizard laptop, **wait for the ICOM head to be detected**, and then click "Start"
- 4 At any time, you can click on "Settings" to set to make changes

POPULAR PROCEDURES

Emergency Flash (BN2020 family)

- 1 Select and click on Emergency Flash
- 2 Select ECU; then click Ping for current module info
- 3 Multiple software/hardware versions will populate on right- side of screen; select desired HW number; then click on Flash new HWnr; then select desired ZBnr
- 4 Click on "Flash new ZBnr"
- 5 Follow final prompts to complete the procedure

Caution: Always flash the ECU first, and then code to the vehicle. If this sequence is not followed, the ECU may be damaged and may need to be replaced.

Vehicle Order (VO)

- 1 Click "Programming and Coding"
- 2 Click "Change Vehicle Order" and then click "Read VO from car"
- 3 Once desired options are found; select & click on option boxes to add or delete vehicle options
- 4 Click "Apply changes to CAR" to save; follow prompts to complete procedure

BMW WIZARD USER TIPS:

- Always connect a battery maintainer to the vehicle during vehicle flash/coding procedure, otherwise update could fail and could cause ECU to become damaged.
- Emergency flash function allows you to "ping" the ECU, so you can access the current registered VIN, hardware and software numbers.